



AVALON

GOLDSBOROUGH VALLEY

Acreage lots selling from
\$198,000

LIMITED STAGE 2 RELEASE NOW AVAILABLE

Scenic living at Avalon —

**With pristine
mountain views
& serenity on
your doorstep**

Nestled in one of the most picturesque settings in Tropical North Queensland, stage 2 of Avalon at Goldsbrough Valley is now available. Presented by a trusted local development team with a proud history of superb subdivisions in the region, including Redlynch Valley Estate, Avalon is your chance to live the acreage dream.

Goldsborough Valley is located between high mountains south of Cairns where the beautiful Mulgrave River runs out to the sea. So close to the city while feeling like a world away. Construction commenced on Gordonvale Woolworths. Secure your place in paradise today.



Close to schools,
medical centre,
recreational activities,
cafes & service stations



Spacious blocks in
beautiful natural
surroundings



Short drive to popular
swimming holes, waterfalls,
parks, hiking trails, camping
& day use facilities



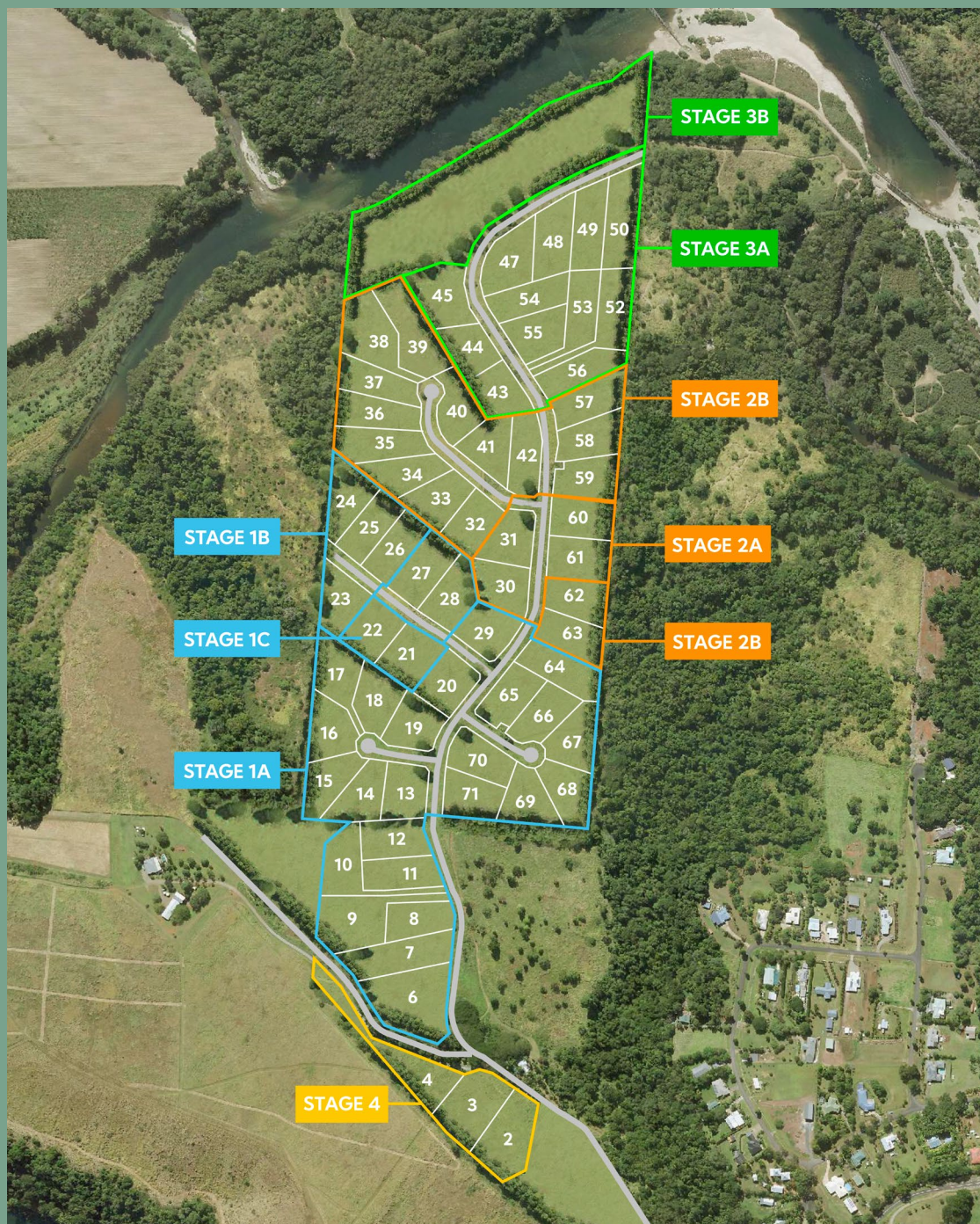
Brian Bolton 0402 440 098 | Phil Harvey 0408 772 255

avaloncairns.com.au

Stage 2 land release brought forward due to high demand. —

Why choose Avalon at Goldsbrough Valley?

- Spacious 1 acre blocks (4000 m²)
- Water and power to each site
- Safe and secure sought-after area
- 35 minutes to Cairns CBD
- 12 minutes to Gordonvale
- Plenty of room for pets, gardens, hobbies and a big shed



AVALON
GOLDSBOROUGH VALLEY

📞 **Brian Bolton** 0402 440 098

📞 **Phil Harvey** 0408 772 255

📍 Catalano Access Rd, Goldsbrough

avaloncairns.com.au

